

# THE KULIN UPDATE

Thursday, 23rd June 2022

## 5 30 BEARD STREET FOR SALE

Further details on page 5.

## 6-7 EMPLOYMENT OPPORTUNITIES

Shire of Kulin has a variety of exciting positions available. Check them out now! Page 6-7.

## 21 FARM SAFETY WORKSHOP

An initiative from Rural Edge to assist you in establishing your safety priorities. Take your safety up a notch. Further information and course details on page 21.

## In Australia it is indisputable...

... that the country's population is continuing to grow and that country living offers incredible opportunities for those who decide to make the move.

### The benefits stick out:

#### Feel the serenity.

Unless you live next to someone with a ride on lawnmower, country living is most appealing to those who want to reap the luxury of a little more space and quiet compared to city living. In 2018, the average home size in Australia fell to a 22 year low of 186.3 square metres, much of this fuelled by the growth in high density living within urban areas. Country living benefits from the fact that larger dwelling sizes remain affordable, with only 16.3% of dwellings considered medium to high density in regional Australia in 2016.

#### Never feel lonely.

If you've watched an episode of the ABC classic, Seachange, then you will have some idea of how connected smaller country towns can be. What underpinned the success of that show was that, despite the comedic element of having the minutiae of your life known by every member of town, it was the feeling of belonging and community that kept viewers watching. One of the greatest advantages to living in the country is having support from the community, which is harder to find in

## LIVING IN THE COUNTRY? DEFINITELY WORTH IT!



urban areas. Kulin is known for being very welcoming and always encourages people considering rural living to have a look at our town. Kulin has an attractive lifestyle with second to none leisure facilities, strong community spirit and very low criminal rate.

#### Better living standards.

In many ways, living in the country affords you luxuries that those in urban areas just don't get. This includes the above benefits of community engagement and larger living spaces, but the advantages go beyond these. Consider your access to natural environments for camping, hiking etc., cleaner air, less noise pollution, smaller schooling class sizes, etc. The physical and mental benefits to living in the country are a key reason why so many people make

the decision to bring up their children in such an environment.

#### Less jobs and infrastructure?

This is commonly seen as a deterrent to living in the country, and for some industries, there is just no getting around the fact that you may need to diversify what you do or completely rethink your career if you want to reap the rewards of living in the country. However, the Shire of Kulin offers a variety of attractive employment opportunities that are definitely worth having a look at.

**Interested?** Please visit:

<https://www.kulin.wa.gov.au/council/news/employment-opportunities.aspx>



Mon- Fri 8:30 am- 4:30 pm  
38 Johnston Street, Kulin WA 6365  
(08) 9880 1021  
[crccounter@kulin.wa.gov.au](mailto:crccounter@kulin.wa.gov.au)  
[www.kulin.wa.gov.au/crc-home](http://www.kulin.wa.gov.au/crc-home)

## "KULIN UPDATE" - FAQ

### Contact

Phone: (08) 9880 1021  
Email: [marketing@kulin.wa.gov.au](mailto:marketing@kulin.wa.gov.au)

### How to receive the Kulin Update via Email?

To receive the "THE KULIN UPDATE" digitally, please sign up [here](#).

### How to advertise in the Kulin Update?

1. Download the Kulin Update Booking form and fill it in.
2. Attach the booking form and the content that you wish to publish to an email and send it to [marketing@kulin.wa.gov.au](mailto:marketing@kulin.wa.gov.au).

### When are the deadlines?

All articles incl. fully-filled in booking forms are to be submitted no later than **Tuesday, 4pm prior to any publication date.**

### When is the next deadline?

The next deadline will be **Tuesday, 5th July 2022, 4pm.**

### Advertising costs:

1/4 page b/w	\$20
1/2 page b/w	\$25
Full page b/w	\$40
Full page colour	\$80
Front page	\$100

Members receive 25% off advertising costs, please contact [crccounter@kulin.wa.gov.au](mailto:crccounter@kulin.wa.gov.au) for more information.

### Accepted document formats:

- EMAIL
- WORD
- PDF
- JPEG

### Have you got news?

If you would like to share news or information with the Kulin community, please email [marketing@kulin.wa.gov.au](mailto:marketing@kulin.wa.gov.au)

## SIGN UP!

### GENERAL PUBLIC NOTICES

The Kulin CRC offers a free email service to inform the Kulin Community about "GENERAL PUBLIC NOTICES" that will have an impact on the Kulin shire community.

Please note, that this service is separate from the "KULIN UPDATE EMAIL DISTRIBUTION LIST".

To sign up for "GENERAL PUBLIC NOTICES" please click [here](#).

## HAPPY BIRTHDAY!

### June

25th	Isobel Noble
26th	Brenton Tyson, Simon Duckworth, Jocelyn Owen
29th	Shahan Hobson
30th	Grantly Mullan, Janine Noble, Rachel Argent, Tanya Dupagne

### July

1st	Royce Argent
2nd	Paul Cook, Pauline Tyley
5th	Jan Ryan

## DEADLINES TO SUBMIT CONTENT FOR THE KULIN UPDATE

Tuesday	5th July	4 pm
Tuesday	19th July	4 pm
Tuesday	2nd August	4 pm
Tuesday	16th August	4 pm
Tuesday	30th August	4 pm
Tuesday	13th September	4 pm
Tuesday	11th October	4 pm
Tuesday	25th October	4 pm
Tuesday	8th November	4 pm
Tuesday	22nd November	4 pm
Tuesday,	6th December,	4 pm

## Welcome back to another CEO corner for 2022...

The month of June continues contributing towards a solid winter rainfall. Things are certainly looking fresh and green around the place.

Last week was the final Council Meeting for 2021-22 Financial Year. Key things passed by Council at the June Meeting were:

- Adoption of Public Health Plan.
- Amendments to Reserve Transfers.
- Corporate Business Plan 2021-2025.

Council is required to develop a Public Health Plan acceptable to the Chief Health Officer of the Department of Health in accordance with Section 45 (1) of the Public Health Act 2016. This included consultation through consultant Llew Withers, via a Health & Wellness Survey that was developed specifically targeted to the people living in the Shire of Kulin and was undertaken in late 2021. The final Public Health Plan is to be submitted to the Department of Health's Chief Health Officer and advertised on Council's website.

Council has reviewed the Strategic Community Plan 2021 – 2025 in February 2022 and adopted the reviewed

plan in February 2022. Council has set the strategic priorities that will drive the operation of the Shire of Kulin over the short (12 months) to medium term (4 years).

The Strategic Community Plan and the Corporate Business Plan will now be advertised in accordance with the requirements of the Local Government Act 1995 & Local Government (Administration) Regulations 1996.

The Corporate Business Plan is an internal business planning tool that translates Council Priorities into deliverables with the resources available. The plan details the how the Shire of Kulin will deliver Council's Strategic Initiatives via either Projects, Advocacy or Discussion within a defined period. The Plan identifies the Shire of Kulin's current position in relation to the delivery of the Corporate Business Plan priorities. It reprioritises services, projects or other operations to respond to changes in the community, business and environment or available resources and it allows for an evolving and rolling Corporate Business Plan which generates an Annual Budget.

Within this Corporate Business Plan, the costs associated with the operations and projects that the Shire will deliver over the period of the Plan are preliminary and indicative. These figures will

be refined each year as the Annual Budget is adopted by Council and will be incorporated into the Long-Term Financial Plan, the Asset Management Plan and the Workforce Plan.

The Shire still has a number of vacancies advertised. Should any local community members be interested in any of the positions in a part time or fulltime capacity please contact the Shire office directly for further discussions. I can confirm that Grant Jenks will be commencing with the Shire in early July in the newly created position of Works Supervisor. We welcome Grant back to our community and Works Team.

On the sporting front last week saw the Kulin Golf Club host its annual Nona Wilson Day. Last weekend also saw the Great Southern Colts Carnival held in Lake Grace. Congratulations to all involved.

As always plenty happening in Kulin, until next time safe travels.

Garrick Yandle - CEO

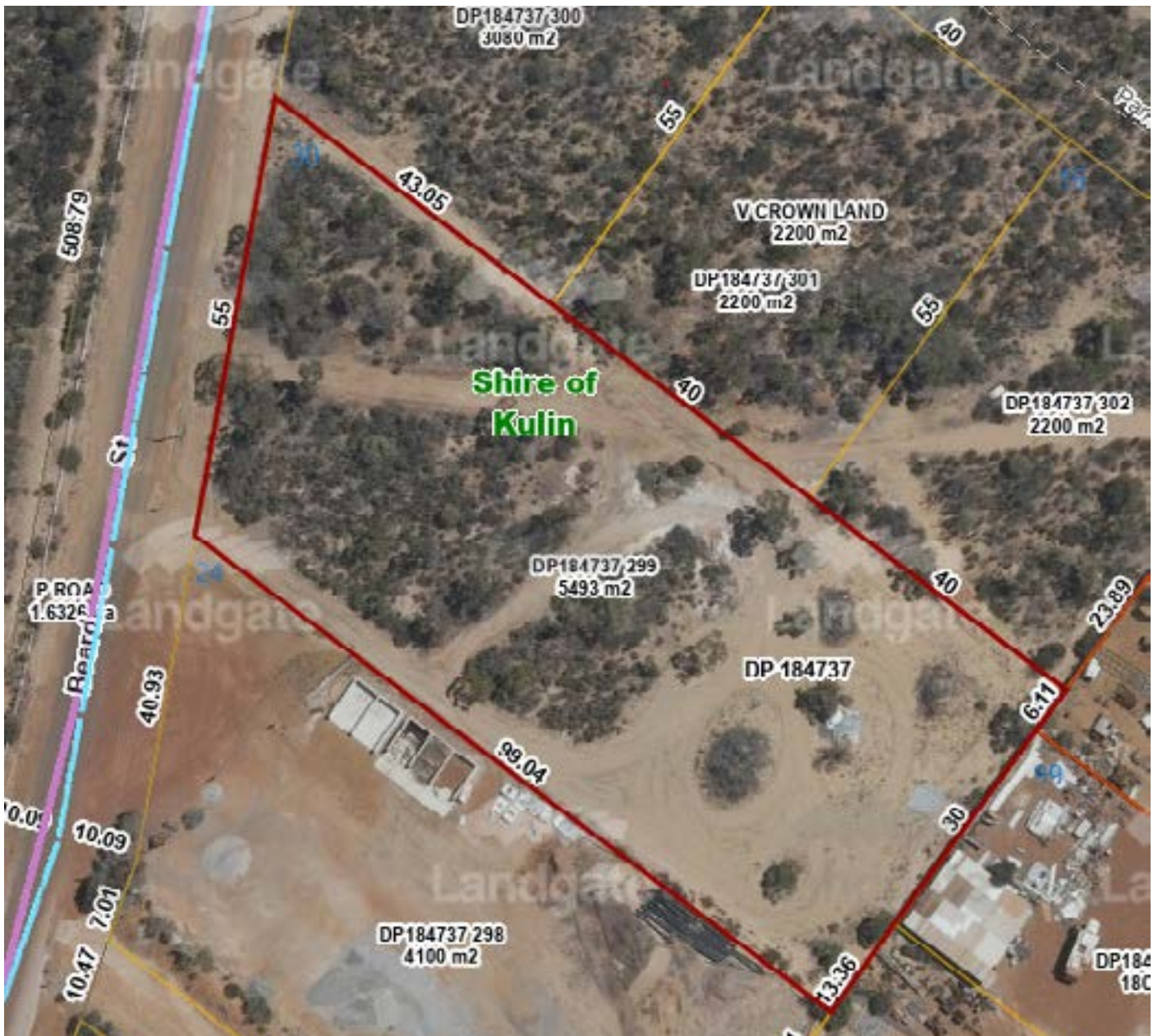


## JULY 2022

Mon	Tue	Wed	Thu	Fri	Sat	Sun
<p><b>27</b></p> <p>Spring Art Craft, 10am—4pm</p>	<p><b>28</b></p> <p>Physio @FRC</p> <p>Nurses Station Open 8.30am—12pm</p>	<p><b>29</b></p> <p>Kulin Motor Museum, 10am-2pm</p> <p>Physio @ FRC Stableford (L)</p> <p>Nurses Station open 8.30am—12pm</p>	<p><b>30</b></p> <p>4pm, Deadline to RSVP for Seniors Movie Day</p> <p><b>KULIN UPDATE</b></p> <p>Spring Art Craft, 10am—4pm</p>	<p><b>1</b></p> <p>Nurses Station open 8.30am—12pm</p>	<p><b>2</b></p> <p>Kulin Motor Museum, 10am—2pm</p> <p>Kulin/Kondinin vs Hyden Karlgarin @ Kulin</p> <p>A Grade: KU 1 vs HY1</p> <p>B Grade: KU 2 vs HY 2 10.10am</p> <p>Juniors: KU vs HY 2.00 pm</p> <p>KK Vipers vs KHATS</p> <p>KCM 9am—1pm</p> <p>Spring Art Craft, 10am—4pm</p>	<p><b>3</b></p> <p>10:30am: Morning Tea at Uniting Church</p> <p>11am Service, Uniting Church</p> <p>Captains Choice (L/M)</p> <p>Spring Art Craft, 10am—4pm</p>
<p><b>4</b></p> <p>Spring Art Craft, 10am—4pm</p>	<p><b>5</b></p> <p>Physio @ FRC</p> <p>Nurses Station open 8.30am-12pm</p> <p>Spring Art Craft, 10am—4pm</p>	<p><b>6</b></p> <p>Kulin Motor Museum, 10am-2pm</p> <p>Physio @ FRC Stableford (L)</p> <p>Nurses Station open 8.30am—12pm</p> <p>Spring Art Craft, 10am—4pm</p>	<p><b>7</b></p> <p>4pm, Deadline to RSVP for Seniors Movie Day</p> <p><b>KULIN UPDATE</b></p> <p>Spring Art Craft, 10am—4pm</p>	<p><b>8</b></p> <p>Nurses Station open 8.30am—12pm</p> <p>Provincial @ Denmark Golf Club (L)</p> <p>Spring Art Craft, 10am—4pm</p>	<p><b>9</b></p> <p>Kulin Motor Museum, 10am—2pm</p> <p>BYE</p> <p>BYE</p> <p>BYE</p> <p>Provincial @ Denmark Golf Club (L)</p> <p>Kondinin Open Day 4 BBBB</p> <p>Spring Art Craft, 10am—4pm</p>	<p><b>10</b></p> <p>Provincial @ Denmark Golf Club (L)</p> <p>Merle Mullan Day 3</p> <p>Person Ambrose (L/M)</p> <p>Spring Art Craft, 10am—4pm</p>
<p><b>11</b></p> <p>Seniors Movie Day, Forrest Gump, 11am</p>	<p><b>12</b></p> <p>Physio @ FRC</p> <p>Nurses Station open 8.30am—12pm</p>	<p><b>13</b></p> <p>Kulin Motor Museum, 10am-2pm</p> <p>Physio @ FRC Stableford (L)</p> <p>Nurses Station open 8.30am—12pm</p>	<p><b>14</b></p>	<p><b>15</b></p> <p>Nurses Station open 8.30am—12pm</p>	<p><b>16</b></p> <p>Kulin Motor Museum, 10am—2pm</p> <p>Corrigin vs Kulin Kondinin</p> <p>A Grade: C1 vs KU1</p> <p>B Grade: C2 vs KU2</p> <p>Juniors: C vs KU</p> <p>Corrigin vs KK Vipers</p>	<p><b>17</b></p> <p>10:30am: Morning Tea at Uniting Church</p> <p>11am Service, Uniting Church</p> <p>2nd Championship Round (L/M)</p>
<p><b>18</b></p>	<p><b>19</b></p> <p>Physio @ FRC</p> <p>Nurses Station open 8.30am—12pm</p>	<p><b>20</b></p> <p>Kulin Motor Museum, 10am-2pm</p> <p>Physio @ FRC</p> <p>Farm Safety Work shop, 9am, FRC</p> <p>Stableford (L)</p> <p>Nurses Station open 8.30am—12pm</p>	<p><b>21</b></p> <p><b>KULIN UPDATE</b></p>	<p><b>22</b></p> <p>Nurses Station open 8.30am—12pm</p> <p>Rural Bronze @ Albany Golf Day (L)</p>	<p><b>23</b></p> <p>Kulin Motor Museum, 10am—2pm</p> <p>Kulin Kondinin vs Southern Cross @ KN</p> <p>A Grade: KU1 vs SX1</p> <p>B Grade: KU2 vs SX 2 11.20am</p> <p>Juniors: Ku BYE</p> <p>KK Vipers vs Souths</p> <p>Frيره + Ice Ball, 6.30pm arrival</p>	<p><b>24</b></p> <p>Stableford (L/M)</p>
<p><b>25</b></p>	<p><b>26</b></p> <p>Physio @FRC</p> <p>Nurses Station open 8.30am—12pm</p>	<p><b>27</b></p> <p>Kulin Motor Museum, 10am-2pm</p> <p>Physio @ FRC Stableford (L)</p> <p>Nurses Station Open 8.30am—12pm</p> <p>Council Meeting</p>	<p><b>28</b></p>	<p><b>29</b></p> <p>Nurses Station open 8.30am—12pm</p>	<p><b>30</b></p> <p>Kulin Motor Museum, 10am—2pm</p> <p>Nukami vs Kulin Kondinin</p> <p>A Grade: N1 vs KU1</p> <p>B Grade: KU2 vs K2</p> <p>Juniors: KU vs K</p> <p>Corrigin vs KK Vipers</p> <p>Want 4BBB Hyden Open Day</p>	<p><b>31</b></p> <p>3rd Championship Round (L/M)</p>

Football kick-off times: Reserves: 11am, Juniors 1pm, League 2.15pm Netball start times A-Grade 12:30pm, B-Grade 11am, Juniors 2pm Hockey start times: Juniors 11am, B-Grade 12:15pm, A-Grade 2pm, Men 3:30pm





# FOR SALE

## 30 BEARD STREET KULIN

Vacant land in industrial zone

The Property is being sold under Part 6, Division 6, Subdivision 6 of the Local Government Act 1995 (WA) in an as is, where is condition and subject to the Shire's terms and conditions of sale which can be obtained on enquiry.

Written offers of \$25,000 or above will be considered.

All enquiries to Fiona Murphy, Deputy Chief Executive Officer on

**dceo@kulin.wa.gov.au or 9880 1204**





## CURRENT VACANCIES

### Community Resource Centre Trainee

Are you an energetic and self-motivated person? Are you looking to gain new skills? This is more than just a job, its an opportunity for growth and training! We have an exciting opportunity as a Community Resource Centre Trainee at the Shire of Kulin.

Sound interesting?

Why not grab some more information about either role by jumping on our website. ↓

**VISIT: [KULIN.WA.GOV.AU](http://KULIN.WA.GOV.AU) FOR MORE INFORMATION**



## CURRENT VACANCIES

### Truck Driver & Roller Driver

Are you looking for a change in scenery? Then we have an opportunity for a Truck Driver & Roller Driver at the Shire of Kulin.

Sound interesting?

Why not grab some more information about these full-time roles by jumping on our website.



**VISIT: [KULIN.WA.GOV.AU](http://KULIN.WA.GOV.AU) FOR MORE INFORMATION**



## COORDINATOR/ADMINISTRATOR

This is more than just a job, its an opportunity for growth! Are you an energetic and self-motivated person? Do you enjoy working with children? We have an exciting opportunity as a Child Care Centre Coordinator at the Shire of Kulin.

Our wonderful 19 place centre is looking for either a full time Coordinator or a part-time administrator. Qualifications are preferred but not essential.

Sound interesting?

Why not grab some more information about this role by jumping on our website or contacting Taryn Scadding (cdo@kulin.wa.gov.au/9880 1204) ↓

**VISIT: KULIN.WA.GOV.AU FOR MORE INFORMATION**



## Shire of Kulin Corporate Business Plan Review

Local governments are required to adopt Corporate Business Plans under S5.56 (1) of the *Local Government Act 1995*. Regulations made under S5.56 (2) require local governments to review the plans every 4 years, and that process of review is to include community engagement and consultation.

The modified Corporate Business Plan (Draft) was adopted at the Shire of Kulin Ordinary Meeting held 15<sup>th</sup> June 2022.

Under the *Local Government (Administration) Regulations 1996* 19D, Shire of Kulin advise that the modified Strategic Community Plan (Draft) applies to the Shire of Kulin for the period 2021 – 2025.

The plan is available for viewing

- Hard copy from Shire of Kulin
- Via email
- Shire of Kulin website

(<http://www.kulin.wa.gov.au/documents/320/kulin-corporate-business-plan>)

Written submissions regarding the Strategic Corporate Business Plan (Draft) can be made to Shire of Kulin either via email or delivered to Shire of Kulin.

**Submission Period is 24<sup>th</sup> June 2022 – 22<sup>nd</sup> July 2022.**

Any questions regarding the Draft Plan please feel free to contact

Garrick Yandle      [ceo@kulin.wa.gov.au](mailto:ceo@kulin.wa.gov.au)  
Taryn Scadding      [cdo@kulin.wa.gov.au](mailto:cdo@kulin.wa.gov.au)  
Fiona Jasper      [eso@kulin.wa.gov.au](mailto:eso@kulin.wa.gov.au)

Date Advert Posted	24 <sup>th</sup> June 2022	
Date Advert Removed		





## Shire of Kulin Community Strategic Plan Review

Local governments are required to adopt Community Strategic Plans under S5.56 (1) of the *Local Government Act 1995*. Regulations made under S5.56 (2) require local governments to review the plans every 4 years, and that process of review is to include community engagement and consultation.

The modified Community Strategic Plan (Draft) was adopted at the Shire of Kulin Ordinary Meeting held 16<sup>th</sup> February 2022.

Under the *Local Government (Administration) Regulations 1996* 19D, Shire of Kulin advise that the modified Strategic Community Plan (Draft) applies to the Shire of Kulin for the period 2021 – 2031.

The plan is available for viewing

- Hard copy from Shire of Kulin
- Via email
- Shire of Kulin website  
(<http://www.kulin.wa.gov.au/documents/320/kulin-strategic-community-plan>)

Written submissions regarding the Strategic Community Plan (Draft) can be made to Shire of Kulin either via email or delivered to Shire of Kulin.

**Submission Period is 24<sup>th</sup> June 2022 – 22<sup>nd</sup> July 2022.**

Any questions regarding the Draft Plan please feel free to contact

Garrick Yandle      [ceo@kulin.wa.gov.au](mailto:ceo@kulin.wa.gov.au)  
Taryn Scadding      [cdo@kulin.wa.gov.au](mailto:cdo@kulin.wa.gov.au)  
Fiona Jasper      [eso@kulin.wa.gov.au](mailto:eso@kulin.wa.gov.au)

Date Advert Posted	24 <sup>th</sup> June 2022	
Date Advert Removed		

## Kulin Netball Club - v Narembeen

Round 6 on the 11th of June was all Netball and Football in Kondinin against Narembeen. Unfortunately it wasn't the most attractive final scores for all grades. Everyone had some players out and with Narembeen's polished set plays all three grades had a loss, thankfully the wet weather held off and the sun stayed out while the games were on. On a positive our juniors had fun despite the final score. Neisha Duckworth was player of the day scoring those two goals, reading the play well and using space on the court, WELL DONE! This weekend coming A1 play against Burracoppin, and everyone else has another bye.

### Results round 6:

A Grade  
NB(49) KU(17)

B Grade  
NB(55) KU(17)

Juniors  
NB(30) KU(2)  
Ashlee West



## KFC vs Hawks

Last week the Blues hosted the Hawks in Kondinin.

The reserves game the Blues made a slow start as Narembeen got off to an early lead. Biggo returned from injury in the resses to help out in defence along with Timmy and DJ, Mags who were under pressure all game. At the main break the Blues trailed and needed to lift in the second half. Some promising signs for the club as the younger brigade contributed well with Ethan, Toby, Zac, George all having a crack. Crabby played a terrific game in the ruck along with Nic, Roadsy, Kurt just to name a few. Unfortunately the Blues were no match for the Hawks going down to the better side on the day.

Reserve Award Winners: C.Crabbe, L.Biglin, N.Savage, T.McInnes

The league game promised to be a solid hit out with the top of the table clash. The Blues also started

slowly with the Hawks gaining an early lead. Our skipper Tully lead the way in the middle of the ground along with Jobsy, Grabbas, Dooly. With George missing Stretch and Brayden shared the ruck duties doing a terrific job through the middle of the ground. At halftime the Blues trailed needing a spark to get something going in the second half. Duck played well again up forward along with Jaan, Toby, Baz whilst the backline worked hard all day lead by Sosl, Kerry and Scads. Unfortunately the Blues went down gallantly as the Hawks ran out eventual winners.

League Award Winners: T.Biglin, S.Schorer, A.Scadding, C.Schorer

The club wore black arm bands out of respect for the McInnes family with the sad passing of Mick McInnes the week prior. The club would like to send condolences to the family in this tough time. Mick was a well loved character in the community and a much loved member of the Kulin Football Club.

The club would like to wish all the Blue boys well representing the EDFL in the colts carnival this weekend in Lake Grace.

The following week the Blues travel away to Burracoppin to take on the Cats. Hopefully our supporters can make the trip to support the boys.

Go Blues  
Jarrad West

## Kulin Golf Club - Nona Wilson Ladies Golf Day



What a fantastic couple of days for ladies golf in Kulin last week! Sixty ladies came to the annual Nona Wilson Open Day to play on our picture perfect course in 19 degree sunshine - and what a time they had.



Wednesday evening they went on a bus tour to Yeerakine Rock for sunset wine and nibbles and then back to the Hub for dinner- Thursday morning saw them at Acres of Taste for early morning coffee before their big golf day.



There were some very good scores on the board at the end of the day. The nett winners were Cheryl Dearlove and Tam Wilkins with 48 points with runner up Cindy House and Sarah Taylor and gross winners were Di Hughes and Denise Ibbottson with runner up Jan Bachelor and Ruth Bigwood.

The Wilson family once again came out in force to support our club - this year spoiling our winners with beautiful pearl studs backed up by Yarrawallan honey for novelty prizes.

A HUGE thank you to the shire work crew who had a busy bee to ensure our course and amenities were in ship shape condition - thanks also to the staff at the Freebairn Recreation Centre who helped us set up and manned the bar.



Thanks to the bowling ladies who assisted in the kitchen and congratulations to the club members who made sure the day ran smoothly - we are indeed lucky to live in a town where we all support each other.

Our "Nona" golf day is growing in numbers each year and after this one I envisage this trend will continue.  
Wendy Gangell





## Streetscape Pots

Many of you will have now seen the new statement pots in High Street. These have been a long time in the making, with our Town Crew and Gardeners patiently waiting through summer and for plant availability.

Pots of this size have been used to enable us to grow larger street trees while protecting our streets surfaces, and also providing flexibility should they need to be moved.

The pots contain a Magnolia Teddy Bear tree, which will grow to 3-4 metres and bear white flowers. There will also soon be smaller plants spilling over the sides of the pots bringing a splash of colour.

We hope you all enjoy the beauty of the plants as they mature!

## Tech Savvy Seniors Group

The Tech Savvy Seniors Group has been cancelled until further notice.



## RAPID ANTIGEN TEST KITS AVAILABLE

The Shire of Kulin has secured RAT tests for the community which are ready to be purchased Mon- Fri 8:30am - 4:30pm. The tests are \$45 per 5pack.



## Bring home the bacon

To "bring home the bacon" is to return home triumphantly, having achieved some plan or objective, perhaps a pay rise or promotion at work. The saying refers to the custom of the Dunmow Flitch which dates back nearly 900 years. Any person kneeling at the church door in the village Dunmow, Essex, who swore that for a year and a day he

had never had an argument with his wife or wished himself unmarried, could claim an award. It was a flitch (or side) of bacon. But only eight people won it in more than 500 years.

## could sleep on the clothline

When people are really exhausted and tired out, they sometimes say "I could sleep on a clothline".

They are lucky they don't have to. In the last century in big cities like London, people had to do just that.

Landlords of inns used to charge people twopence a night to sleep sitting up on a bench, leaning against a line stretched tight in front of them. It was known as the "twopennyrope". Often, callous landlords would wake their guests in the morning simply by cutting the rope.



WESTCOAST WOOL & LIVESTOCK  
**KULIN BUSH RACES**

**SEP 30 - OCT 2 2022**

**DAMIEN CRIPPS BAND | SOPHIE JANE BAND | EDONA HEARTLAND | FLYTE**

HORSE RACING - LIVE MUSIC - LICENSED BAR - FIREWORKS - CAMPING  
FOOD VANS - KIDS ACTIVITIES - FREE TOWN TO TRACK SHUTTLE BUS  
ENTERTAINMENT ALL WEEKEND

.....  
ONLINE TICKETS ONLY - EFTPOS & ATM FACILITIES - LICENSED EVENT  
PHOTO ID REQUIRED 18+ - NO BYO - NO CONCESSIONS



[WWW.KULINBUSHRACES.COM.AU](http://WWW.KULINBUSHRACES.COM.AU)



## Many thanks to the Kulin Golf Club...

... in hosting the 2022 Wynona Wilson golf day.

With a field of about 60 starters it was a big event and so a big shout to coordinators Wendy Gangell and Helen King for wrangling us all.

Also to Club Captain Phil Roads and his team for the work behind the scenes - putting final touches on the course, escorting people and buggies to correct tees, deciphering score cards, even rolling up the sleeves and washing up!

Course was amazing, weather was amazing, food and facilities were amazing- Kulin is amazing!

We all appreciate that these events are supported in a myriad of ways and a grateful nod to the Shire and community for their assistance.

Finally to all the Wilson family, Nona and John have touched the lives of many people. This event brings friends old and new together. I can't help but think they would be quietly pleased.

Helen Miller  
Cottesloe Golf Club

Ps apologies to the local cafe that suffered an onslaught of people looking for a morning caffeine fix. I hope it wasn't too traumatic!

## Kondinin Medical Centre - Opening Hours

The Kulin Medical Centre is now open as usual.

Bookings are available online via Hotdoc or call the Medical Centre 98 891 753 to book.

For urgent after-hours medical attention please contact the Kondinin Hospital on 9894 1222.

**The Kulin Nuses Station is open on Tuesdays, Wednesdays, Fridays 8:30am -12pm.**

## Hugo and Elsa

Many thanks to our French backpackers Hugo and Elsa who have been of great help at the Freebairn Recreation Center and surrounds. The Shire of Kulin wishes them all the best and save travels for their future journeys.

## Your thoughts matter to us

Written or photographic contributions to The Kulin Update are always welcome. Whether you're a long-time resident or a local business owner, we'd love to hear from you. Email words, images, pdfs or article ideas to [marketing@kulin.wa.gov.au](mailto:marketing@kulin.wa.gov.au) for consideration.

## Receive the Kulin Update electronically

Sign up to The Kulin Update – our e-newsletter that gets delivered to your inbox fortnightly. Hit the subscribe button at <https://www.kulin.wa.gov.au/#newsletterscroll> or send an email to [marketing@kulin.wa.gov.au](mailto:marketing@kulin.wa.gov.au)

# KBR TICKETS TO GO ON SALE- 1ST AUGUST AT 10AM

**It is official... our ticket masters in Jack and Mike Wilson are busy preparing for the launch and tickets will go live on our website at 10am on Monday the 1st of August!**

**Last year we SOLD OUT in only 12 hours. So don't delay and urge all your family and friends who intend on coming to make sure they get in early. We don't want them to miss out!!**



### WANTED

We are chasing a cool room to borrow or hire for the race weekend. If you have one handy, please get in touch with Tom 0488 422 477 or Alecia 0438 987 134.

### TAB COORDINATOR

Mike Robins has been coordinating the TAB for many years and is desperately seeking some assistance or a replacement coordinator in this area.

If you think you could help, please contact Mike 0429 465 278.

*Kulin Arts and the Kulin Community Arts Centre*

**SPRING**

**ART / CRAFT Exhibition**

**2nd 10th July 2022**

**10am-4pm**

**\$2 entry with door prize**

Exhibitor information

*Artwork can be any medium (2D or 3D)*

*No bigger than A3 (297 x 420 mm)*

*Exhibition fee is \$5 per exhibit*

*Entry form to be received by 24th June*

*Online entry form: [www.jotform.com/ErinBailey/2022springexhibition](http://www.jotform.com/ErinBailey/2022springexhibition)*

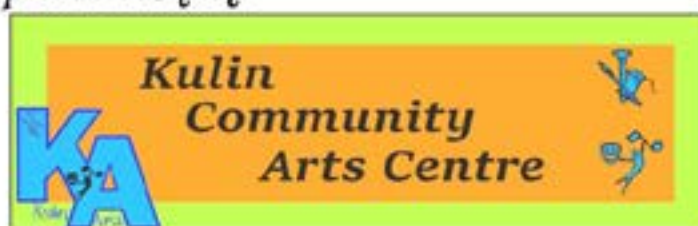
*Exhibits to be received by 27th June*

*For more information or an entry form please contact:*

*Val Whiting 0429 685 131*

*Erin Bailey 0429 809 013*

*arts@kulin.com.au*





**Saturday 2nd July 2022**

**9am-1pm**

**Kulin Memorial Hall**

\$10 per stall (community groups free)

Stallholder application forms and information available from:

- [www.facebook.com/kulincommunitymarkets](http://www.facebook.com/kulincommunitymarkets)
- **Online form:** [www.jotform.com/ErinBailey/KCM02072022](http://www.jotform.com/ErinBailey/KCM02072022)
- **Erin Bailey:** 0429 809 013 [erin@kulin.com.au](mailto:erin@kulin.com.au)
- **Kulin CRC:** 9880 1204 [admin@kulin.wa.gov.au](mailto:admin@kulin.wa.gov.au)

***Stalls already booked. Don't miss out on your space.***

• Morning Teas—Kulin CWA	• Sausage Sizzle—Kulin Arts
• White Elephant stall	• Artisan soap
• Hand cranked woollen socks and woven garments.	• Handmade cards jewellery chocolate
• Indoor plants and succulents	• Native and bush tucker plants
• Lucky number game	• Re-Imagined jewellery and crafts



## Kulin childcare happenings

Well winter is certainly here with plenty of rain, much to the delight of the children, puddles = mud = FUN!! We have still been getting outside to appreciate the fresh cool air away from indoor heating, building up our immunity and vitamin D .

Topics we have focused on include the Ocean – Sea creatures, float and sink, water craft and the health of the ocean. This included learning about the impact of rubbish and disasters such as oil spills on our sea creatures, and finding ways we can make the ocean cleaner and safer.

We have learnt about the different types of transport such as on top and underneath the ocean, discussed what types of transport we have used ourselves, and at the moment we are creating a recycled cardboard submarine for the children to enjoy plenty of group role playing.

As it is winter and many homes have fire places we have been learning all about fire safety and how to respond in an emergency. In conjunction with this learning, we celebrated “ Thank a First Responder Day ” by inviting our local Fire Brigade to visit the centre and present them with a card and present in recognition of their hard work to keep us and our community safe. Thankyou to our Fire Dept for visiting the centre and for keeping our Community Safe. And a big thankyou to all our First Responders for our community x.

Until next time

Staff of KCCC xo







**LASERCORPS**

# KIDS LASER TAG

AGE 6 &  
OVER

\$10  
PER  
CHILD

**WEDNESDAY 6TH JULY**  
**AT THE HYDEN HALL**

**STARTING AT 11AM TO 3:30PM**

\*CHILDREN MUST WEAR INCLOSED SHOES\*

**LUNCH PROVIDED!**

**PRIZES FOR BEST DRESSED CAMOUFLAGE**

**TO SIGN UP CONTACT:**

STEEVI-LEE - 9880 5160 OR [HYCDO@KONDININ.GOV.AU](mailto:HYCDO@KONDININ.GOV.AU)

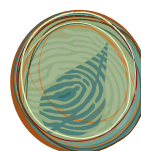
OR

KIRSTIE - 9889 1006 OR [KNCDO@KONDININ.GOV.AU](mailto:KNCDO@KONDININ.GOV.AU)

**THERE IS A BUS FROM KONDININ TO HYDEN AVAILABLE!**

CHILDREN AGE OF 6 WILL NEED PARENT SUPERVISION, ALL PARENTS ARE WELCOMED.

**PLEASE BOOK YOUR SEAT BY MONDAY, 4TH JULY 2022**  
**RING KONDININ SHIRE OFFICE AT 9889 1006**



**wheatbelt**  
natural resource  
management



## Community Feral Animal Control Funding

Are foxes, cats and rabbits having an impact on your bottom line?

Feral animals impact Wheatbelt farms and take out large numbers of native species.

Our Healthy Bushlands program offers pest control support to anyone wanting to reduce the effects these animals are having on native species in bushland on, or adjacent to, their property.

If you require more information contact Alex Griffiths on 9670 3102 or email [agriffiths@wheatbeltnrm.org.au](mailto:agriffiths@wheatbeltnrm.org.au)



To apply scan the QR code or visit:

[wbrnm.your2cents.com.au/community-feral-animal-control](http://wbrnm.your2cents.com.au/community-feral-animal-control)



**National  
Landcare  
Program**



**wheatbelt**  
natural resource  
management

This project is supported by Wheatbelt NRM through funding from the Australian Government's National Landcare Program

# EXPERIENCE THE WORLD'S #1 TRIBUTE SHOW



ARENDALS TIDENDE,  
NORWAY



FINANCIAL EXPRESS,  
INDIA



BROADWAY BABY



THIS IS LONDON



WHATSONSTAGE



# FAULTY TOWERS

Original

the Dining Experience



Interactive  
Theatre

## Freebairn Recreation Centre

Kulin-Lake Grace Rd, Kulin, WA 6365

**Saturday 13 August 2022**

Arrival between 7:00 and 7:30pm, show starts 7:30pm

\$100.00 pp, incl. 3-course meal and 2-hour show

**08 9880 1021 | [www.trybooking.com/BYKVS](http://www.trybooking.com/BYKVS)**



*Cultivating Kulin Committee  
presents*

# Fire & Ice Fundraising Gala

23rd July 2022

*The Freebairn Recreation Centre*

Kulin-Lake Grace Rd, KULIN

6:30pm - Arrival

*Followed by:*

Welcome

3 Course Dinner

Live Auction (raising money for various community projects)

*Live Music & a whole lot of fun...*

Dress: Formal/Black Tie

Tickets: \$125/person - <https://www.trybooking.com/BZDCB>

*"Alone we can do a little, together we can do a lot"*

**Please email all dietary requirements and table  
bookings of 8-10 people to:  
[fionajasper@yahoo.com.au](mailto:fionajasper@yahoo.com.au)**

# Kulin Shire Council Ordinary Meeting Dates 2022

July	Wednesday	27 July	1:00pm
August	Wednesday	17 August	1:00pm
September	Wednesday	14 September	1:00pm
October	Wednesday	19 October	1:00pm
November	Wednesday	16 November	3:00pm
December	Wednesday	21 December	1:00pm

## Farm Safety Workshop

### Safeguarding your People and Business

**KULIN:** Wed 29 June 2022 (9.00am – 3.00pm)

Freebairn Recreation Centre, Kulin-Lake Grace Road, Kulin WA 6365

“

A very good introduction to farm safety. A clear overview or plan of how to approach it and plenty of resources to use along the way

2021 Workshop Attendee

#### WORKSHOP CONTENT

An interactive workshop designed to get you started on improving farm safety and building a system. This workshop will assist you to establish your safety priorities and provides clear templates and guidelines to get you started or take your safety up a notch.

#### KEY TAKE AWAYS

- Laws and Penalties
- Employer and Employee responsibilities
- Tools to break down resistance & create a good safety culture
- Safety Basics
- Hazard identification including the Take 5 concept
- Standard Policies
- Safe Work Instructions
- Staff Inductions
- Visitors and Contractors
- Checklists and Templates for getting started



## INDEPENDENT SUPPORT WORKER Employment Opportunity

Seeking expressions of interest from community members in Newdegate, Lake Grace, Kulin and Hyden.

Support worker required for NDIS Participant.

**\$60.00 per hour, travel negotiable.**

**8 – 16hrs per week, direct supports.**

**Have you heard of the NDIS?** In communities where disability support agencies may be lacking, self-managed and plan-managed NDIS participants may purchase supports through private arrangements. Self-directed support also allows people the choice and control to lead their own lives.

**Being an Independent Support Worker requires you to have an Australian Business Number (ABN). You are also responsible for managing your own insurance, tax and superannuation.**

Disability support workers are committed to meeting the needs of people with a disability within the community by providing supports in relation to their NDIS goals.

**For more information relating to this employment opportunity, please contact:**

**Donna Lane: 0429 805 004**

**Maven Support Solutions: 0475 154 414**



### COMPLAINTS TO MAINROADS

IF YOU EXPERIENCE AN ISSUE WITH THE MAINROADS NETWORK,  
PLEASE USE THE FOLLOWING AVENUES TO LET THEM KNOW.



138 138



enquiries@mainroads.wa.gov.au



PO Box 6202 East Perth WA 6892



<https://www.mainroads.wa.gov.au/contact-us/>  
(Report an issue online)



# Farm Tech Workshop

## Making your data work for you

### KULIN

Freebairn Recreation Centre, Kulin-Lake Grace Road, Kulin WA 6365

Tues 18 October 2022 (9.00am – 3.30pm)

More information via [ruraledge.org.au/workshops/farm-tech-planning-making-your-data-work-for-you](http://ruraledge.org.au/workshops/farm-tech-planning-making-your-data-work-for-you)

### WORKSHOP CONTENT

*This workshop provides a great opportunity to learn and refine how to implement & benefit from the use of technology on farm*



### KULIN GOLF CLUB

### MERLE MULLAN FUN GOLF DAY

JULY 10<sup>TH</sup> – 3 PERSON AMBROSE

(PREFER ONE PERSON A NON GOLFER)

**PLEASE BRING A SAVOURY PLATE TO SHARE**

Morning tea from 10.00 am hit off 11.00am

Entries to Phil Roads 0427801245

Helen King 0437809027

Join us for a fun filled day of casual golf

Followed by a light evening meal.



## SENIORS MOVIE DAY

FREE EVENT!

MON, 11TH JULY 2022

SNACKS PROVIDED!

11:00AM - 12:30PM  
KULIN CRC  
CHAMBERS

Tom Hanks is  
**Forrest Gump**



"Life is like a box of chocolates... you never know what you're gonna get." Forrest Gump is the movie triumph that became a phenomenon. Tom Hanks gives an astonishing performance as Forrest, an everyman whose simple innocence comes to embody a generation. The winner of six Academy Awards including Best Picture, Best Director (Robert Zemeckis) and Best Actor (Tom Hanks).

Please RSVP by Thursday 7th July 2022, 4pm



## LOCAL CHURCH

### UNITING CHURCH

10:30 am Morning Tea,

11:00 am Service

Starts - 1st and 3rd Sunday each month.

### CATHOLIC CHURCH

Fr Tom Zureich.

Phone 9880 1436

Mobile 0425 414 088

### KULIN ANGLICAN CHURCH

Although regular Kulin services have stopped for the time being, the Anglican church can still be made ready for special services and events.

Contact Katheryn Wilson 0429 801 228 in Kulin or the Bunbury Anglican Diocesan Office on 08 9721 2100.

### KULIN MOTOR MUSEUM OPEN TIMES

Wednesday 10am - 2pm

Saturday 10am - 2pm

Contact Clarrie 9880 1058 ,  
Bill 0429 804 615 or  
John 0427 386 849 outside of these hours.

## LIONS CLUB OF KULIN



We collect your old glasses, hearing aids and stamps. Please feel free to drop off any of these items at the Kulin Post Office. Push bikes and batteries can be dropped at Haydn's Shed.

### CONTACTS

H McInnes 0429 801 215

B Herwig 0400 163 599

R Doust 0499 802 054

### KULIN COMMUNITY ARTS CONTAINERS FOR CHANGE

An easy way to make your contribution to Arts in Kulin is to support their Containers for Change collection. Simply return your containers and use their ID C10333381.

### JUSTICES OF THE PEACE

MT Lucchesi 9880 4050

JM McInnes 9880 1360

PJ Mullan 0427831041

R Noble 9880 1383

BW Sloggett 9880 9036

## KULIN CHILD CARE CENTRE CONTAINERS FOR CHANGE

Did you know you can support our local Child Care with your bottles and cans? Just drop your eligible containers into the bin behind the Kulin Memorial Hall, or return them to any Containers for Change donation point and use their ID C10351204.

### CONTACTING YOUR LOCAL POLICE

Kulin Police Station is staffed by two police officers who, when required, are available to respond to incidents 24/7.

Your local police can be contacted as follows:

- If you require police in an emergency dial 000
- If you wish to report a non-urgent matter to police dial 131444
- If you wish to speak to an officer at Kulin Police Station dial 9861 5800.

If the Kulin Police Station phone number is diverted to Albany Police Station, the public and local community are encouraged to hold the line and leave a message with staff there, should they wish to speak with their local police.

## MAIN ROADS COMPLAINTS

If you experience issues with the Mainroads network, please call them directly on 138 138, or go to <https://www.mainroads.wa.gov.au/contact-us/> where you can report your issue online.



**Riki & Steph's Mulesing Crutching Service**

Call Riki on 0497 088 842 or Steph on 0447 754 175

SPECIALISING IN THE PREVENTION OF FLY STRIKE AMONGST YOUR FLOCK AND MINIMISING THE RISK OF CONTAMINATION IN YOUR WOOL CLIP.  
WE OFFER A PROFESSIONAL TEAM AND A PROFESSIONAL AND RELIABLE SERVICE.

## Make the Best In-Season Nutrient Decisions

Using nutrient Fuel Gauges and inSITE Plant Analysis, your local Area Manager can help you make the best in-season nutrient decisions.

Speak with Steve today!

SUMMIT FUEL GAUGES      SUMMIT inSITE

**Steve Cooke, Area Manager - Corrigin**

**Mobile:** 0429 934 243    **Email:** scooke@summitfertz.com.au





## Central Agcare COUNSELLING

Free, confidential counselling services are available to all. We offer counselling to all age groups from 5 years of age.

Face to face counselling or by phone servicing the Corrigin, Bruce Rock, Naremben, Kulin, Kondinin, Hyden, Quairading, Brookton, Pingelly, Cuballing & Wickepin areas.

*Sand play and Art Therapy is available for children at the Corrigin office.*

We are qualified Family Counsellors who can help individuals, couples and families negotiate their way through distressing experiences and bring understanding to them such as:

*Anxiety*

*Depression*

*Life changes (physical & mental)*

*Abuse (past and present)*

*Loss and grief and*

*Relationship issues (home & work)*

We are here to help.

Contact our Counsellors:

Joyce Contos: 0428 891 244

Anne Hague: 0427 133 711

Email: [ceagcare@bigpond.com](mailto:ceagcare@bigpond.com)



20 Kirkwood Street, CORRIGIN (PO Box 6, CORRIGIN, WA 6375)



**As rare as a West Coast Eagles win...  
The T8.380 in WA!!!**

**The NEXT GENERATION is here!!  
Lock in your price now for early delivery!**

New Holland GENESIS T8 Series tractors are the most powerful conventional tractors in the world.

New Holland DNA runs through every aspect of the GENESIS® T8.380. Power, fuel efficiency, stability and maneuverability are all rolled into this one-of-a-kind tractor.

ABSOLUTE DRIVING PLEASURE with MAXIMUM VERSATILITY

CALL Shane Perkins 0429 947 434



**Krone 1290 HDPHS Baler  
New Model (2021)**

**IN STOCK ready for the 2022 hay season**

**PRICE: POA**

The Krone BiG Pack 1290 HDP HS is the result of a number of Krone **innovations**, all cleverly packed into one machine, taking baling density to a whole new level!

With its six double knotters and 120cm wide x 90cm high baling chamber, this baler produces firm, tidy bales in the right size for the international market.

The EasyFlow pick up runs approximately **30% quicker** than conventional systems. It also has 60% fewer moving parts, resulting in **less maintenance and services costs**.



**CALL SHANE PERKINS NOW!! 0429 947 434**



**Your local dealer for:**



**FAMILY OWNED AND OPERATED IN NARROGIN WA**  
For more information contact Shane Perkins  
Email: [shane.p@permach.com.au](mailto:shane.p@permach.com.au)  
Phone: 08 9881 2222 | After Hours: 0429 947 434



# KULIN CONTACTS

---

## SHIRE CONTACTS

### SHIRE ADMIN OFFICE

#### HOURS

8.30am - 4.30pm

(Monday-Friday)

Ph: 9880 1204

Fax: 9880 1221

Email: [admin@kulin.wa.gov.au](mailto:admin@kulin.wa.gov.au)

Website: [www.kulin.wa.gov.au](http://www.kulin.wa.gov.au)

### SHIRE OF KULIN STAFF

#### CONTACTS

Garrick Yandle

Chief Executive Officer

Fiona Murphy

Deputy CEO

Judd Hobson

Manager of Works

Taryn Scadding

Community Services Manager

Shire Customer Service Officer

Trish Mahe

### CARAVAN PARK

Trish Mahe

Ph: 0439 469 850

### KULIN CRC AND VISITOR CENTRE

8:30am- 4.30pm

(Monday-Friday)

Ph: 9880 1204

Fax: 9880 1221

[crccounter@kulin.wa.gov.au](mailto:crccounter@kulin.wa.gov.au)

Websites: [www.kulin.wa.gov.au](http://www.kulin.wa.gov.au)

[www.visitkulin.com.au](http://www.visitkulin.com.au)

### CHILDCARE CENTRE

8.00am- 5.30pm (Mon to Fri)

Ph: 08 9880 1636

Email: [kulinccc@kulin.wa.gov.au](mailto:kulinccc@kulin.wa.gov.au)

### FREEBAIRN RECREATION CENTRE

Ph: 9880 1000

Email: [reccentre@kulin.wa.gov.au](mailto:reccentre@kulin.wa.gov.au)

### AQUATIC CENTRE

Mark Gillbard

**CLOSED APRIL TO OCTOBER 2022**

Ph: 9880 1204

## EMERGENCY CONTACTS

Kulin Police Station	9861 5800
Kulin Doctors Surgery	9880 1315
Kulin Fire Brigade	000
Kondinin Doctors Surgery	9889 1753
Kondinin Hospital	98941222
Corrigin Hospital	9063 0333
Corrigin Doctors Surgery	9063 2107
Lake Grace Hospital	9890 2222
Lake Grace Doctors Surgery	9865 1208
Hyden Doctors Surgery	0429 082 746
Narrogin Hospital	9881 0333
Narrogin Police Station	9889 1100
Western Power (Emergency)	13 13 51
Water Supply	13 13 75
Kulin Water Depot	9880 1356
Harvest Ban Info Line	9880 1511
Shire of Kulin	9880 1204

## KULIN/KONDININ ALLIED HEALTH SERVICES

Kulin Clinic Nurse 8:30am-12:30pm Tue, Wed, Fri Mornings	9880 1056
Kulin Medical Centre Dr Mackie Tue and Fri Mornings	9880 1315
Kulin Physiotherapist Scott Tue and Wed 9am - 5:30pm	0409 868 114
Child Health Nurse Miranda O'Brien	9880 1056
Narrogin Primary Health Occupational Therapist Speech Therapist Dietician Mental Health Physiotherapist	9881 0385
Aboriginal Health Rachel Andrews	9894 1222
Family Counsellor Central Agcare	9063 2037
Drug and Alcohol Counselling HollyOake	9881 1999
Rural Community Support Service	9881 3939

## LOCAL KULIN PHONE DIRECTORY IS AVAILABLE AT THE KULIN CRC